

# “On Everything *That’s On Sea*”

01

## ▼ Corporation

Anchor Windlass &  
Capstan  
Steering Gear  
Towing Hook  
Towing Pin  
Winch



[datahidrolik.com](http://datahidrolik.com)





[datahidrolik.com](http://datahidrolik.com)



# Data Hidrolik

DATA has been specialized in design and production of steering systems and deck machinery since 1945. With our continual investment in research, design and unwavering commitment to quality has earned us a good reputation in steering systems and deck machinery systems for all kind of marine vessels.

With incorporation of 70 years of experience, detailed computer aid designs and correctly selected marine grade materials and componets, DATA products are dedicated to perform under toughest sea conditions with low maintenance and reliability while meeting high-quality standards and visual criteria.

With our many years experience of manufacturing for marine use, we are well aware of all the problems concering operation in marine atmospheric conditions. Because of this, we are selecting our materials to provide highest quality for reliability and safety.

**“On Everything  
That’s On Sea”**



# Our vision



To be the first preferred brand in yacht, ship and tugboat equipments.

## mission

To develop innovative products and provide customer oriented services in yacht, ship and tugboat equipments sector.

# Segments

DATA offers a wide range of products for almost every type of marine vessels fulfilling our slogan  
“ON EVERYTHING THAT’S ON SEA”

### COMMERCIAL SHIPS

STEERING GEAR



### WORK BOATS

STEERING GEAR,  
ANCHOR WINDLASS,  
CHAIN STOPPER,  
CAPSTAN,  
CENTRAL HYDRAULIC  
POWER UNIT



### TUG BOATS

STEERING GEAR,  
ANCHOR WINDLASS,  
CAPSTAN,  
TOWING WINCH,  
TUGGER WINCH,  
TOWING HOOK,  
TOWING PIN,  
STERN ROLLER,  
CENTRAL HYDRAULIC  
POWER UNIT

### NAVAL SHIPS

STEERING GEAR,  
ANCHOR WINDLASS,  
CHAIN STOPPER,  
CAPSTAN,  
VARIOUS DECK  
MACHINERY

## Our quality policies

- Establishing a system based on , continuous design improvement principle, satisfying the customer demand in full manner even in every condition, providing innovative products,
- Training and improving the employees to meet highest production standarts
- Enhance progressively the technology, knowledge and human resources,
- Providing highest quality product and service,
- Developing the quality system, to analyze and control the status and to operate with minimum defect

## Unique solutions

Beside our standart range of products, we offer tailor made solutions. As every project is unique we believe our solutions should fulfill this. Each and every solution we design and create is specifically tailored to represent individual success whilst retaining existing corporate branding.

### YACHTS & MEGA YACHTS

STEERING GEAR,  
ANCHOR WINDLASS,  
CHAIN STOPPER,  
CAPSTAN,  
CENTRAL HYDRAULIC  
POWER UNIT



### OFFSHORE SUPPLY VESSELS

STEERING GEAR,  
ANCHOR WINDLASS,  
CAPSTAN,  
VARIOUS TYPE OF  
WINCHES,  
TOWING HOOK,  
TOWING PIN

### HIGH SPEED CRAFTS

STEERING GEAR,  
ANCHOR WINDLASS,  
CHAIN STOPPER,  
CAPSTAN



### FERRIES

STEERING GEAR,  
ANCHOR WINDLASS,  
CHAIN STOPPER,  
CAPSTAN,  
RAMP WINCH

### FISHING VESSELS

STEERING GEAR,  
ANCHOR WINDLASS,  
CAPSTAN,  
VARIOUS TYPE OF  
WINCHES



# Products

## Steering Gears

DATA designs and manufactures several lines of marine hydraulic steering gears starting from 0.5 kN.m up to 550 kN.m torque (ram-type) in complete ranges. Systems are delivered complete with cylinders, helm pumps, bridge steering controls, hydraulic power units, motor starters and rudder angle indicators ensuring overall systems responsibility for all types of pleasure boats & mega yachts, commercial & offshore vessels and naval ships.



## Anchor Windlasses & Mooring Capstans

DATA designs and manufactures electric or hydraulic motor driven windlasses and capstans in horizontal and vertical versions. Size for windlass starts from 8 mm up to 42 mm stud-link chain and up to 120 kN pull.





## Winches

DATA designs and manufactures various types of winches including towing winches, tugger winches, hoisting winches, anchor winches. Electric or hydraulic motor driven winches are also in a wide range starting from 10 kN going up to 600 kN pull.



## Towing Hooks

As all other DATA products, quick release disc type towing hooks are designed and manufactured to meet the highest standards to be used in severe marine environment and serve in long term with minimum maintenance. There are 5 different models starting from 15 tons up to 100 tons safe working load (SWL).



## Towing Pins

DATA can offer 3 different sizes of towing pins with different configurations. Towing pins are controlled by means of hydraulic cylinders. When pins are not used, they can be pulled inside the body and a flush deck is provided. Towing pins can be equipped with forks which can be used for anchor handling operations





After Sales

# full support throughout *the life cycle*

For us after sales starts from the first contact with our customer and continues through the life of the equipment.

Either a standard product or a tailor made solution for the unique requirements of our customers, our aim is to guarantee the maximum customer satisfaction and give full support throughout the life cycle of our products.

We are well aware of that fast and reliable service are the most critical aspects in marine sector. Therefore, beside the experienced service team employed in our headquarters, DATA has authorized service points worldwide.

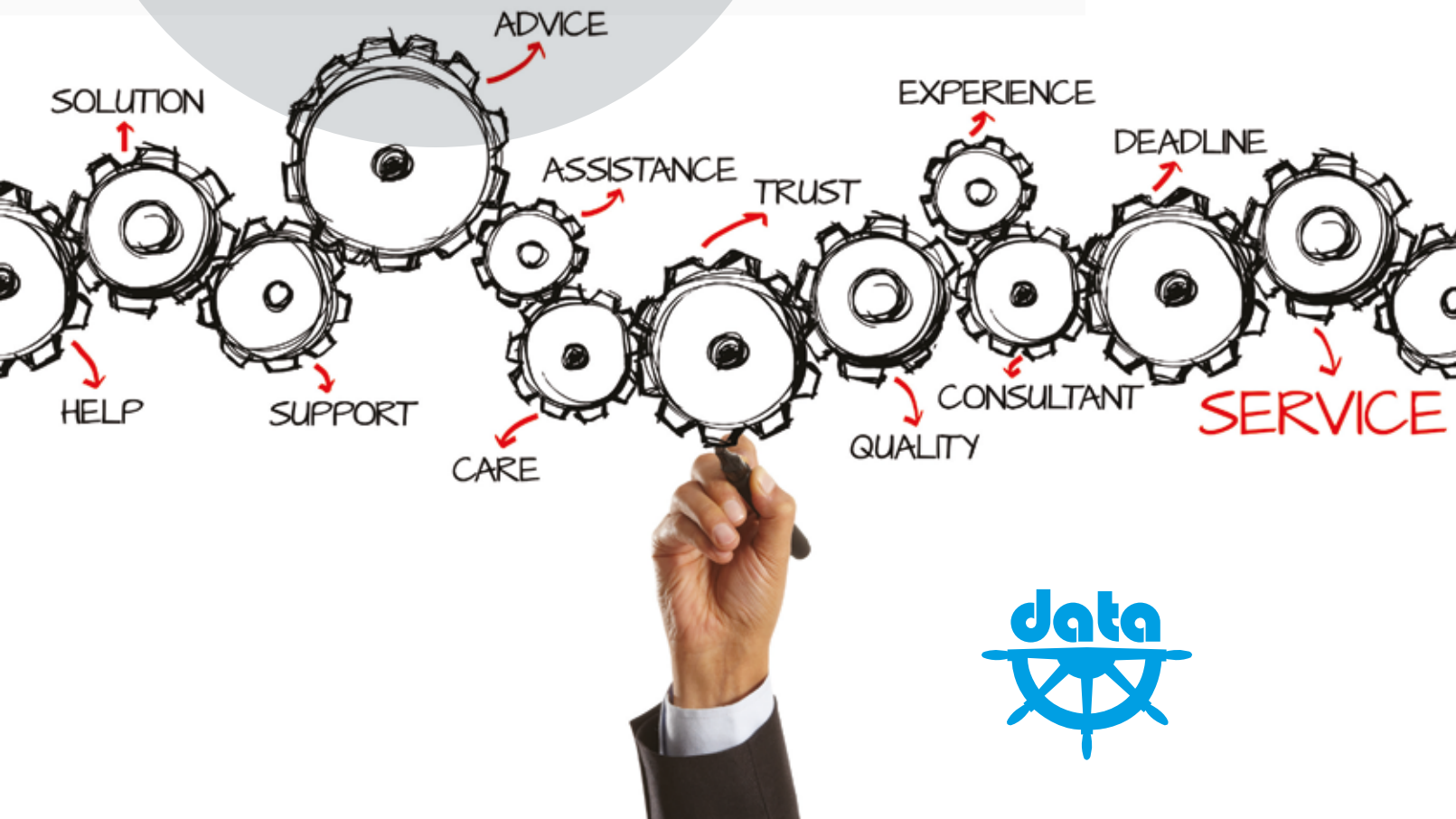




DATA employs an experienced and high skilled service team to provide fastest response to customer request either start-up or repair job on all over the world.

- :: Start up & commissioning
- :: Sea trial tests
- :: Maintenance programs
- :: Repair & Spare parts
- :: Technical assistance

Spare part requests are delivered in shortest time period thanks to our well kept archives, large warehouse stocks and our reliable supply sources.





## Quality Certificates

All DATA products are designed and built by qualified specialists and meet the worlds well-known classification standards including ABS, BV, CCS, CRS, DNV-GL, LR, PRS, RINA, RMRS, RRR, TL.

### ISO 9001:2015

Quality Management System

### OHSAS 18001:2007

Occupational health and safety management system

### CE CERTIFICATES

Cylinders and helm pumps for boats smaller than 24 meters

### TYPE APPROVAL CERTIFICATES

Various models

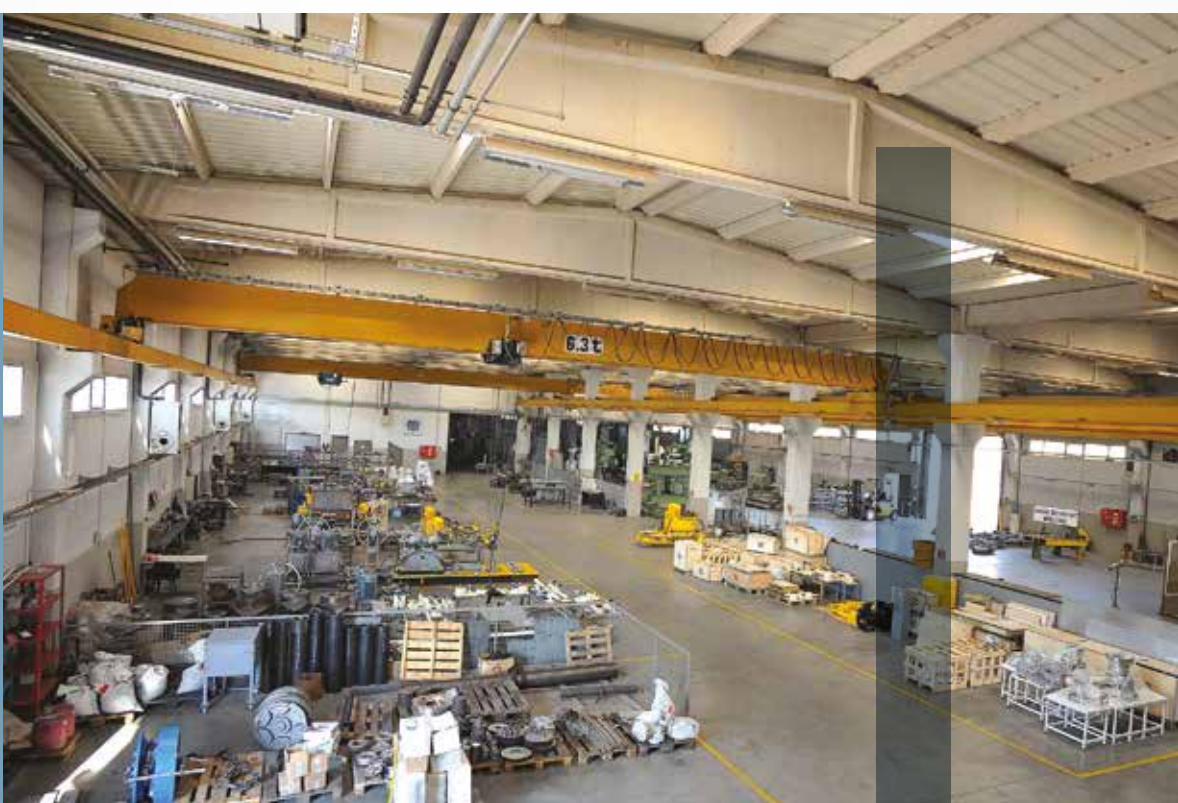


**Our company is performing as an innovative and respectful corporation to the environment in this national and international competitive arena and our globalizing world.**

Acting as respectable to environment and taking care of its employees are amongst the essential corporation values of Data Hidrolik. Whilst executing its activities, it gives a comprehensive attention for being respectful against to social values and striving to keep the safety and security and health of its workers at front line. For all the workers participating into working environment, visitors and contractors, it ensures it by merely adopting an Occupational Health and Safety (OHS) policy and a progressive development to provide a safe and healthy environment. In this respect, Data Hidrolik is certified by LRQA with OHSAS 18001:2007 Occupational health and safety management system.



Our commitment to quality is certified by LRQA with **ISO 9001:2015** Quality Management System and **OHSAS 18001:2007** Occupational Health and Safety Management System.





**İstanbul Deri Organize Sanayi Bölgesi,  
Yan Sanayi Alanı YA-8 Parsel,  
Aydınlı, Tuzla  
İstanbul / TURKEY**

**T: +90 (216) 591 07 45  
F: +90 (216) 591 02 51  
data@datahidrolik.com**

**datahidrolik.com**

